

A-View®

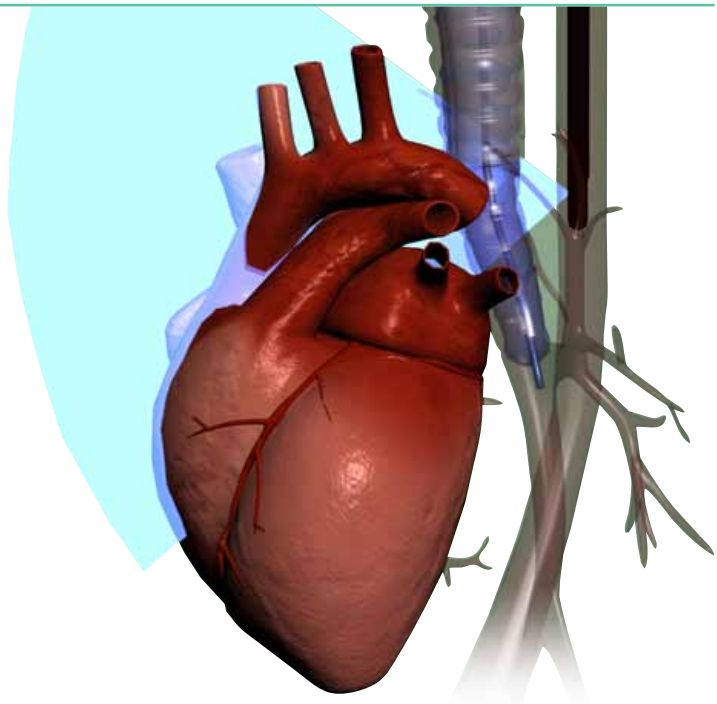
Endotracheal balloon catheter

Unique

Easy to use

CE & FDA

Patient Safety



Resolving the “blind spot” of TEE

A-View enhanced TEE;
A valid method in cardiac interventions*



www.stroke2prevent.com

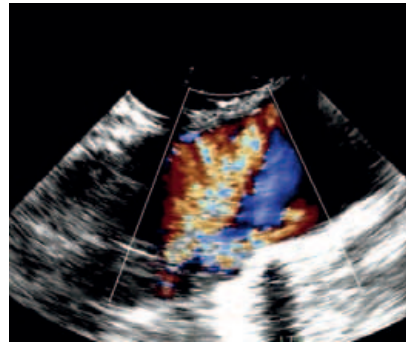
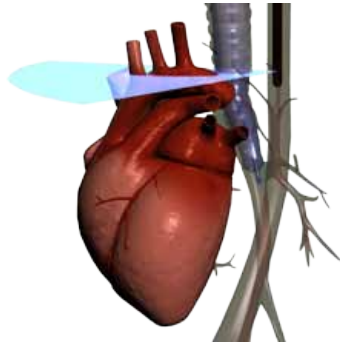
A-View®

Endotracheal balloon catheter

A-View is inserted into the trachea of fully anesthetized patients. The balloon catheter is filled with saline to enable echo conduction through the trachea, thus resolving the blind spot*.



Upper esophageal aortic arch SAX A-View



A-View indications

Peri-operative risk screening

- Open heart procedures
- Transcatheter heart interventions
- Aorta stenting
- Robotic cardiac surgery

Intra-operative monitoring

- Cannula flow monitoring
- Cerebral flow monitoring
- Aortic dissection diagnosis

* Added value of modified transoesophageal echocardiography in the diagnosis of atherosclerosis of the distal ascending aorta in cardiac surgery patients. Eur Heart J Cardiovasc Imaging. 2013 Dec 26.

