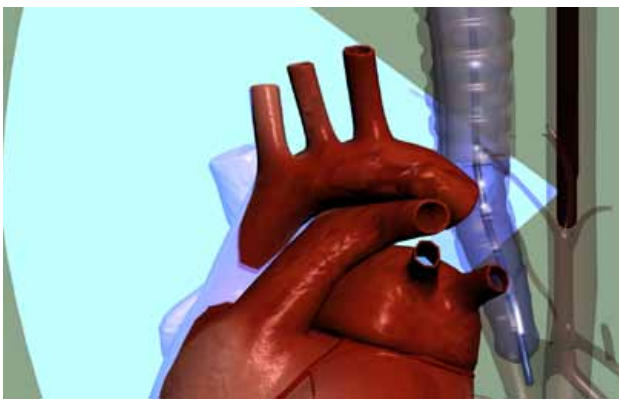


A-View®

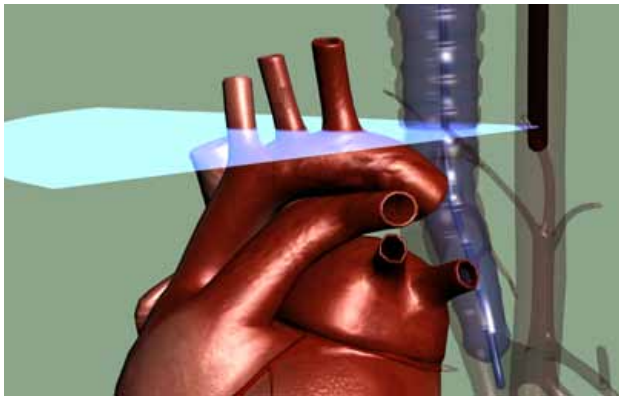
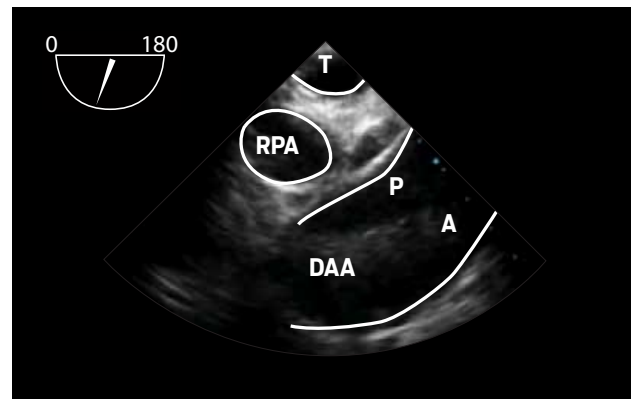
Resolving the 'blind spot' of TEE

A-View® is inserted into the trachea of fully anaesthetized patients. The balloon catheter is filled with saline to enable echo conduction through the trachea, thus resolving the blind spot of TEE.

The following views can be obtained with A-View® enhanced TEE.



Upper Esophagus Distal Ascending Aorta, Long-Axis

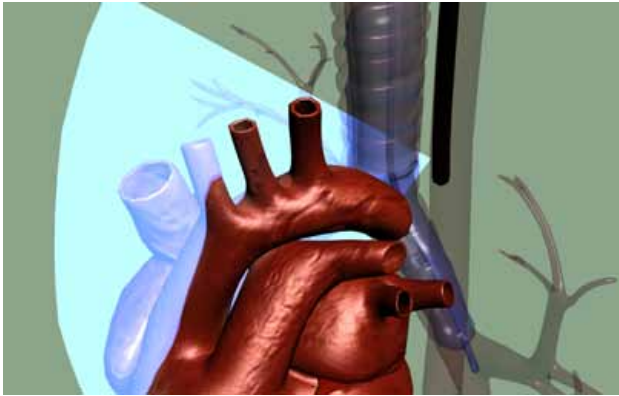


Upper Esophagus Aortic Arch Branch Vessels, Short-Axis

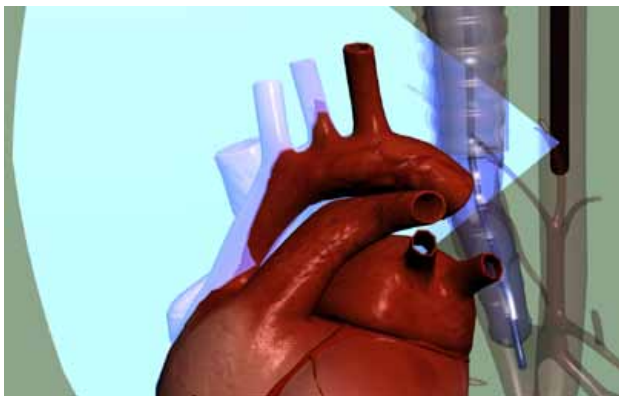
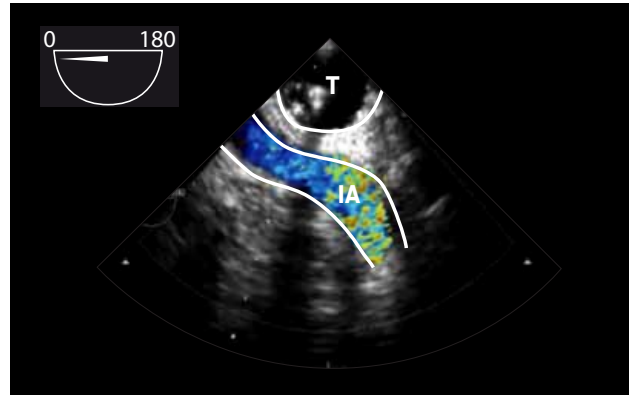


A-View®

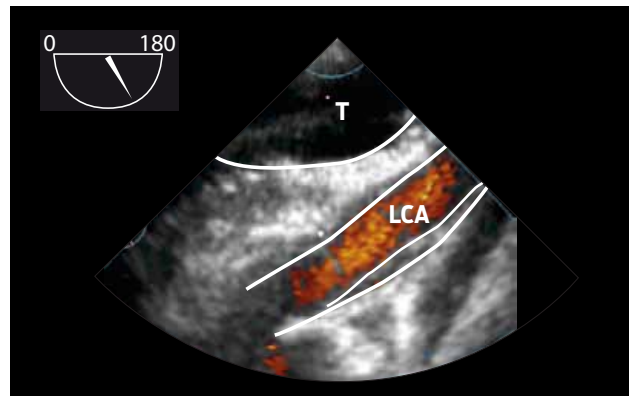
Enhanced TEE with endotracheal balloon catheter



Upper Esophagus Innominate Artery, Long-Axis



Upper Esophagus Left Carotid, Long-Axis



DAA Distal Ascending Aorta

A Anterior wall

P Posterior wall

IA Innominate Artery

LCA Left Carotid Artery

RPA Right Pulmonary Artery

T Trachea



www.stroke2prevent.com